



DUNDAS ST.  
& JARVIS ST.  
TORONTO, ON

# PACE

toronto

#### FIRST GULF CONTACTS

Jonathan Weinberg  
Vice President, Retail  
T: 416.773.7067

Stephen Gosewich  
Retail Leasing Representative  
T: 416.773.7069

# FIRST GULF

[firstgulf.com](http://firstgulf.com)

3751 Victoria Park Avenue, Toronto, Ontario  
T: 416.491.7778 F: 416.491.1351

# FIRST GULF





- LEASED
- COMMON AREAS



**TENANTS:**

UNIT	TENANT	AREA (SF)
1	Pita Land	1,686
2	Dentist	900
3	Good Earth Café	1,708
<b>TOTAL:</b>		<b>4,294</b>

welcome to  
**PACE**

**4,000 sf of ground floor retail space in an urban mixed-use luxury condo.**

- Located at 115 Dundas St. E on the southwest corner of Jarvis Street.
- 417 residential units, 45 storeys including a 10-storey podium with street-level retail space.
- A short walk from the Eaton Centre, Yonge Subway Line, Ryerson University, St. Michael's Hospital, restaurants and much more.

**NEIGHBOURHOOD DEMOGRAPHICS**



**31,963 vehicles per day\***  
Average Daily Traffic Count along Dundas St. at Jarvis



**trade area population\*\***  
within 1 km - 64,290  
within 2 km - 196,811



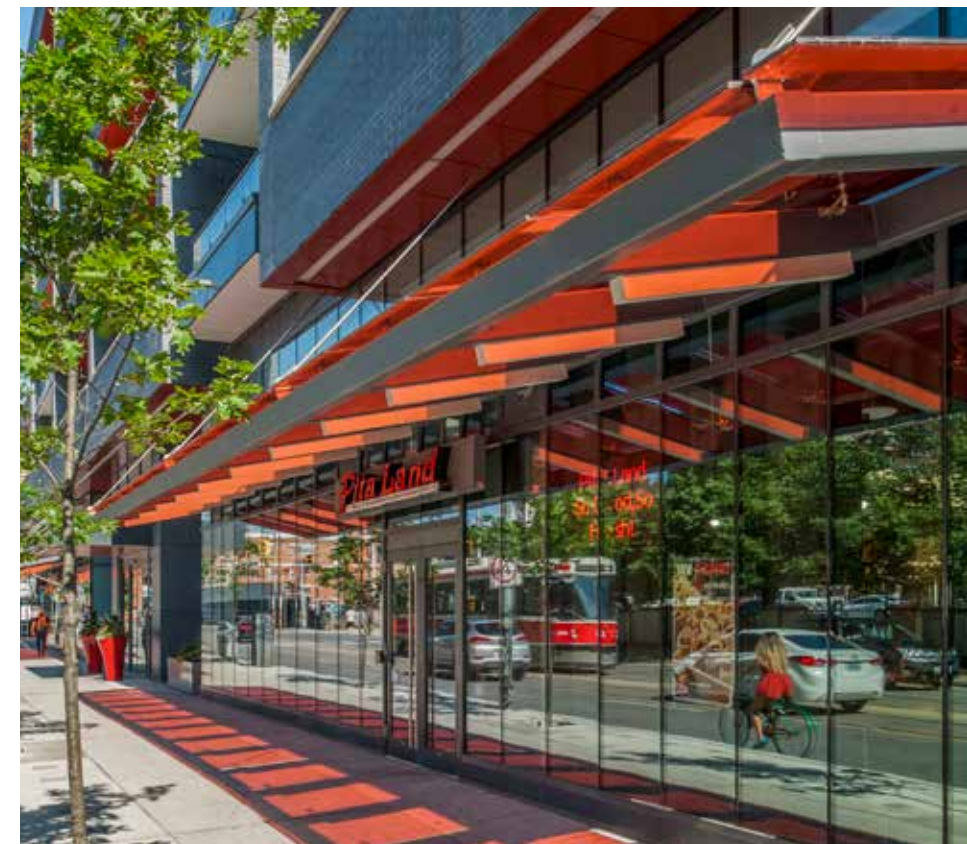
**10 year projected pop. growth\*\***  
within 1 km - 18%  
within 2 km - 24%



**average household income\*\***  
within 1 km - \$113,364  
within 2 km - \$104,563



**trade area households\*\***  
within 1 km - 36,479  
within 2 km - 113,302



\* CITY OF TORONTO TRAFFIC SAFETY UNIT 2012  
\*\* ENVIRONICS ANALYTICS 2018